

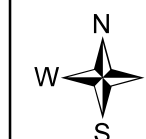
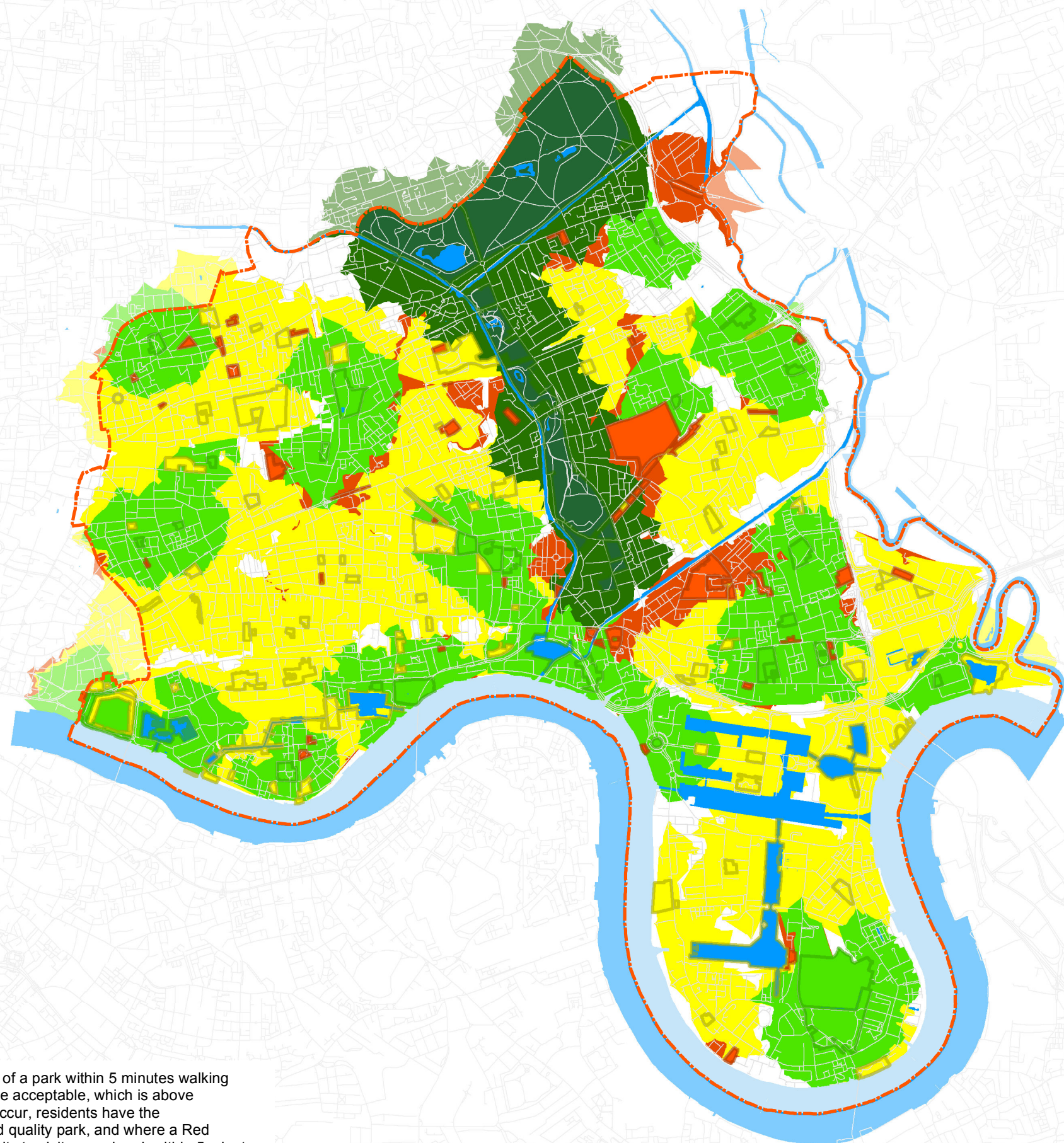
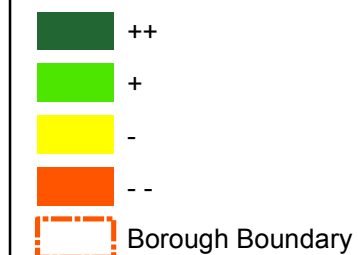
Tower Hamlets
Open Space Strategy 2011

Site Quality Score

Map No: 16

Open Space Quality Scores

Q & V compared
to standards



Revised by D&R (LBTH) May 2011

Drawn by: SP	Checked by:	Revision:
Map No: 15	Date:	Job No:

Scale: 1:30,000 at A3





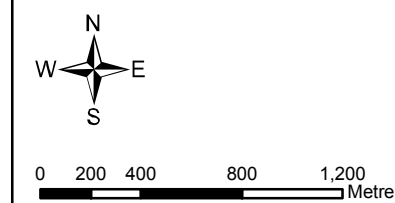
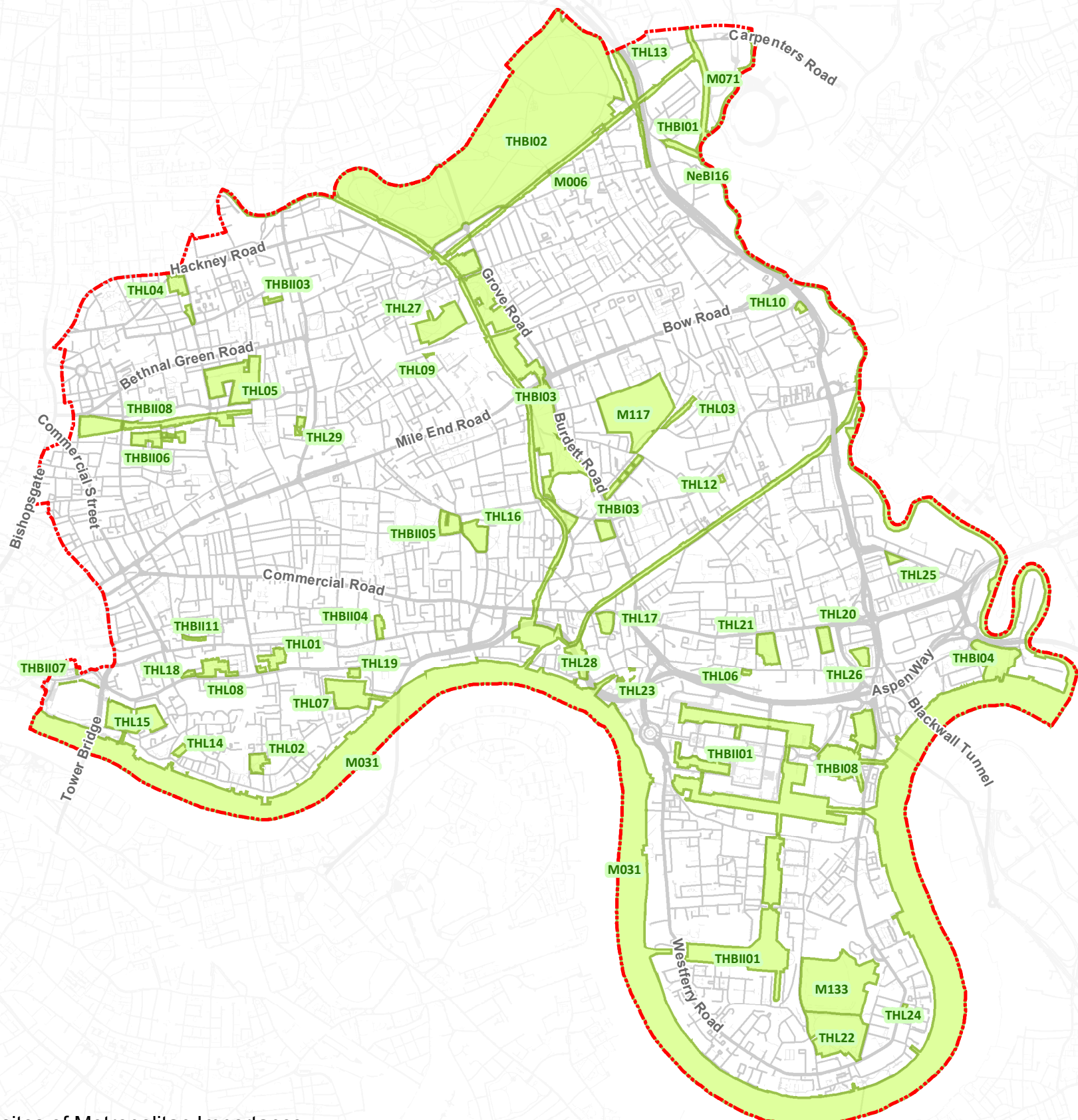
Each catchment represents the quality of a park within 5 minutes walking time. Quality is layered with good above acceptable, which is above poor. Thus where Green catchments occur, residents have the opportunity to walk 5 minutes to a good quality park, and where a Red catchment occurs, there is no opportunity to visit a good park within 5 minutes.

White indicates areas where there is no access to any park or open space within 5 minutes walk.

Tower Hamlets Open Space Strategy 2011

Sites of Importance for Nature Conservation Map No: 17

-  SINC's (Sites of Nature Conservation Importance)
-  Borough Boundary



Revised by D&R (LBTH) May 2011

Drawn by: SP	Checked by:	Revision:
Map No: 17	Date: 25 May 2011	

Scale: 1:30,000 at A3



Notes:
Sites prefaced by "M" are sites of Metropolitan Importance.
Sites prefaced by "THB" are sites of Borough Importance divided into two grades I & II.
Sites prefaced by "THL" are sites of Local Importance.